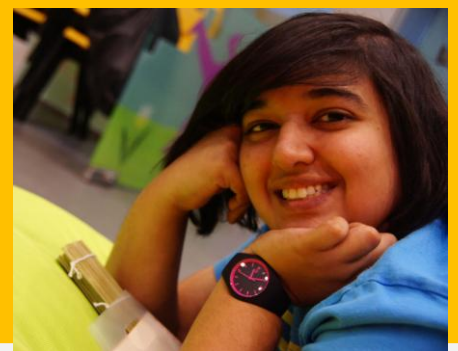




*...to live and leave a legacy*

# LIFE COMMUNITY SERVICES SOCIETY

## 2014 / 2015 Annual Report



## **LIFE COMMUNITY SERVICES SOCIETY**

### **Annual Report for Year Ended 31<sup>st</sup> March 2015**

Life Community Services Society (LCSS) was registered as a Society on 23<sup>rd</sup> March 1996. LCSS became a member of the National Council of Social Service (NCSS) on 20<sup>th</sup> June 2001 and a member of the NCSS General Fund in August 2003. LCSS was registered under the Charities Act on 22<sup>nd</sup> January 2002. We were conferred with the Institute of Public Character status in 2003.

Charity Registration Number	:	01545
ROS Registration Number	:	ROS 106/1996WEL
Unique Entity Number	:	S96SS0100H
Registered Address	:	5001 Beach Road #04-05 Golden Mile Complex Singapore 199588
Mailing Address	:	5 Stadium Walk #04-04/07 Kallang Leisure Park Singapore 397693
Board Members	:	1. Mr Goh Kng Yan, Chairman 2. Dr Tan Kok Beng, Vice-Chairman 3. Dr Gilbert Tan Yip Wei, Secretary 4. Mr Seow Kiat Wang, Treasurer 5. Mr Nicholas Goh Cher Shuie, Asst Treasurer 6. Mr Ban Kok Poh Denus Joel, Member 7. Mr. Shaun Tan Zhonghao, Member
Bankers	:	1. Maybank 2. Overseas-Chinese Banking Corporation 3. Standard Chartered Bank 4. The Development Bank of Singapore 5. United Overseas Bank
Auditor	:	Baker Tilly TFW LLP

## **1996 – 2015**

19 years of dedicated community service by the Grace of God.

### **VISION**

Outreach to the Community.

### **MISSION**

To empower children and families through care and mentoring.

### **4 CORE SERVICES**

#### **❖ Friends of Children**

Providing care and support for children (7-13years old) with parent/s presently/formerly incarcerated.

#### **❖ Friends of Youth**

To befriend & mentor youths (12-19 years old) with parent/s presently/formerly incarcerated.

#### **❖ Life Student Care**

Reaching out to primary school children in the community (regardless of race, language or religion) by rendering quality student care service.

#### **❖ MightyKids, Families & Community**

To affirm and nurture community kids to live an empowered life.

## Chairman's Message

There is much to give thanks as we reflect on the year 2014/2015.

The work which we are called to do has expanded. Many more lives and children are touched through the Friends of Children, Friends of Youth, MightyKids, Families & Community and Life Student Care programs.

The new facilities in Kallang Leisure Park has enhanced our ability to serve the children and their families. The government's matching of 1 for 1 grant has indeed increased our capacity to improve and innovate on our infrastructure and skills to support the work. It does stretch the donor dollar even more. We are thankful that this scheme has been extended by another year.

We see ourselves as stewards of what had been entrusted to us. Children and their families, funds, facilities and the blessings that God poured forth in bringing volunteers, donors, dedicated staff and their families who are mobilised to support all the LCSS events and functions.



We boldly look forward to serve the children in all the 4 core programs better. We want to do more. The emphasis this year will be **FROM BENEFICIARIES TO VOLUNTEERS**. The children who have been touched and transformed in their lives will be given every opportunity to develop themselves in skills and giftings to serve the community in return.

For example, we had organised for them to encourage the neighborhood senior folks in innovative ways. The children under the guidance of staff and volunteers did the whole program...from preparing door gifts and baking cakes to welcoming the elderly and actively engaging them, filling the whole event with fun and laughter.

We will intentionally be on the lookout for more of the children with a heart to serve the community. We want to start them young and inculcate in them an attitude of "freely we receive, freely we give". We thank God for blessing LCSS with faithful funders and supportive agencies like Community Chest, NCSS, MSF, CFS, YRF, PC secretariat. This work would not be possible without our generous donors, faithful volunteers and dedicated staff. Grateful thanks to each of you who stood with us. We look forward to many more fruitful years ahead.

Goh Kng Yan

## CEO's Message

2014/2015 marks 19 years of LCSS's faithful service to the community. It has been a busy year with a new activity centre, increased intake of clients, more intensive case management work and greater fund raising commitments to sustain the work. We have taken more than we have anticipated. Looking back, we are grateful for the support we have received and how we have fared as a team. Our total client based has increased 8% from 1,151 to 1,247.

Our new activity centre in Kallang Leisure Park which also concurrently houses the HQ, opened its door on 1st April 2014. With the new facility, we were able to organise more interest-based activities to reach out to the youth so that they can live empowered lives. The telecasted Care & Share videoclip saw how the giving of a sickly grandfather in his younger days to a small boy was returned years later when the small boy was in a capacity to give. The love and kindness was spread because someone first gave. And aptly, we never know when we would need help one day.

We are thankful to all our volunteers, partners, staff for a successful 2<sup>nd</sup> Run for Life event co- sponsored by Noel Gifts International Ltd which drew a participation of over 3,700 runners, and raised a record \$619,000. We are honoured to have Mr Seah Kian Peng as our Guest of Honor and Emeritus Senior Minister Mr Goh Chok Tong as our special guest for the event held at the East Coast Park. Not only did it help to raise the needed funds to sustain the cost of our four core outreach programs, it also increased the public awareness of the work that Life Community Services Society is doing to help the children and their families to fulfil the potential they have in society.



It was a fun-filled morning with robust energy and camaraderie as people were all happy to mingle and bask in the spirit of giving and bonding.

The work of any charity would not be possible without the support of donors, volunteers and staff. We are grateful to the 300 guests who attended our annual appreciation dinner on 26 April 2015 at the Singapore Swimming Club. We were privileged to have the Chief Executive Officer of National Council of Social Service (NCSS), Mr Sim Gim Guan and his wife to grace the occasion as our Guest of Honor. It was a lovely evening where the community witnessed the fruits of our labour with beneficiaries coming back to share their journey and how their lives have been changed because of LCSS.

Our staff remains our priority; without them we will not be able to deliver the quality of help to our beneficiaries either directly or indirectly through our volunteers. We have taken on a more active role in engaging our staff. For the first time in history, we have brought all the staff on an overseas trip for a staff retreat. Although it was only a humble day trip to Johor Bahru, it was a welcomed break for the team, as it provided a much relaxing and enjoyable time for the staff across the six centres to bond and interact with one another.

At the volunteers end, we are heartened to be able to forge stronger partnerships with existing ones, and build new ones at both the corporate and individual level. We are inspired by the growing corporate social mindedness and the individuals giving of his/her time and resources to lend a helping hand. Nothing is more heartwarming than the human race taking care of one another, and building a caring society.

We have seen an increase in the activity level of the programs being planned for the beneficiaries of Life Community Services Society in the reporting year. The “Youth Give-Back” event where 10 of our youth were involved in helping to bring the elderly from SASCO to the Sentosa Underwater World is an excellent example of how we encourage our children/youth to see the value they can bring to the society. We are constantly working to improve the level of service coverage and exposure for our children and youth so that they will **live and leave a legacy**.

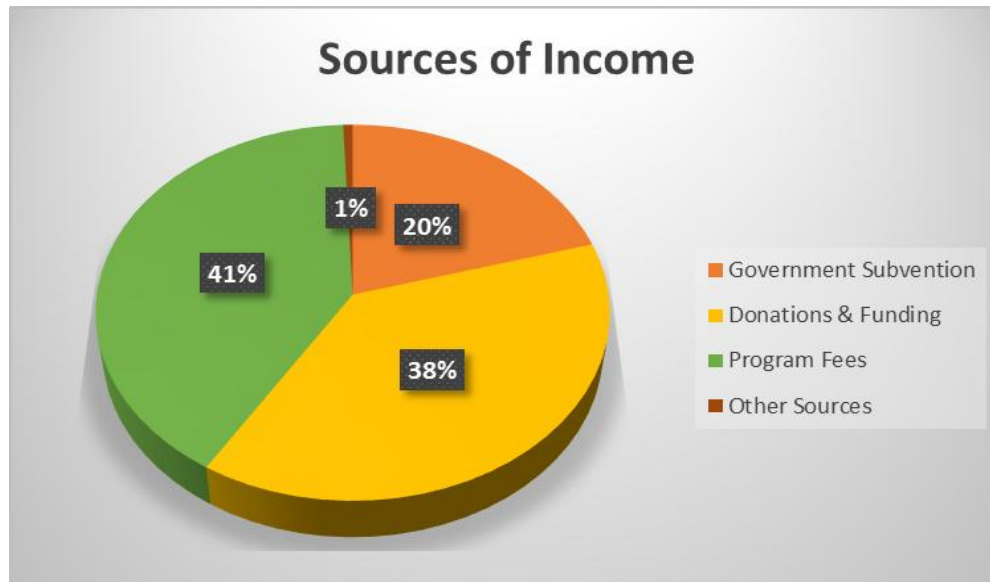
Pressing Onward to our 20<sup>th</sup> Year in serving the Community!

*Lam Moí Kwai*



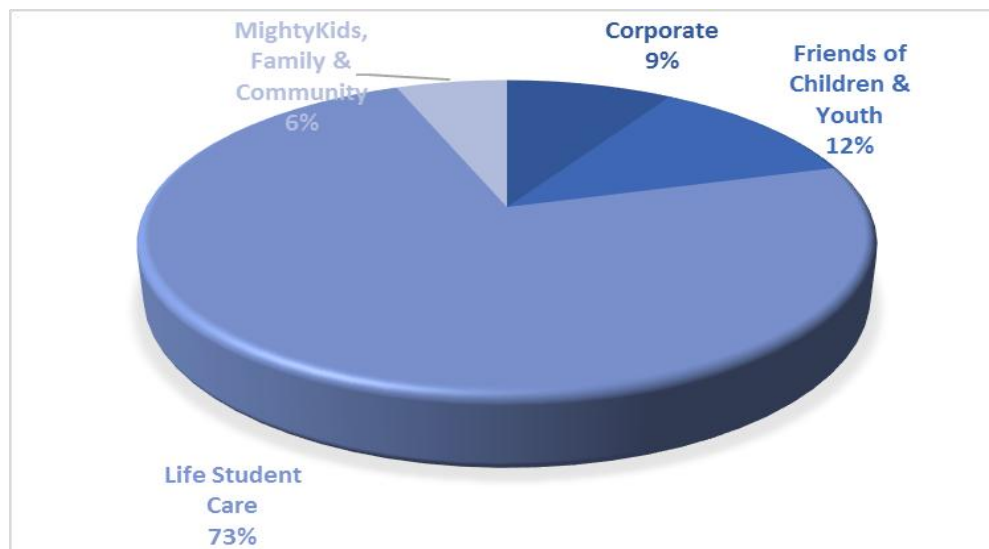
## REVIEW PERIOD 1 APRIL 2014 – 31 MARCH 2015

### 1.1 Sources of Income



### 1.2 Staffing

As at 31<sup>st</sup> March 2015, the breakdown of the staff strength is as follows:



## 1.3 STAFF DEVELOPMENT

### 1.3.1 Staff training

During the year, our level of competence and services to the community was enhanced through sending our staff for the relevant training programs:

- Case Management in Practice
- Counselling Skills and Practice
- Cognitive Behaviour Therapy Introduction
- Fundamentals of the Personal Data Protection Act
- Helping Youths cope with Anger
- Improving Services thru Program Evaluation: the Outcome Management Way
- Redefining Community Giving Services
- Plan & Implement Effective Interventions for Families & Children of Offenders/Formal Offenders
- Rules of Engagement: Collaborating for Greater Productivity
- Towards a Values-Centred Society
- The Competent Youth Worker
- Social Work Fieldwork Supervision Skills
- Volunteer Resource Optimisation

### 1.3.2 Staff Retreat

Staff retreat 2014 was held on 26 July 2014. A team of 55 staff across six centres gathered for a day trip to Johor Bahru. While on the bus journey, the team leaders were assigned to host games and sing songs as the colleagues bonded together. The 1-day trip turned out to be a winner with most, if not all staff, expressing their appreciation for giving a twist to the staff retreat. We would like to thank Wendy Sim, our Sengkang supervisor for taking the lead in organizing the retreat, and all staff for their joyful participation.





## 1.4 PROGRAMME REPORTS

### 1.4.1 FRIENDS OF CHILDREN & YOUTH

Friends of Children & Youth (FOC &Y) is into its 11<sup>th</sup> year of helping children, youth and their families. In my nine years of working together with the team of case workers, we have learned many lessons and face challenges that many could not comprehend. At times, we struggle with going the extra mile of reaching out to the children/youth as more time and effort is needed which makes our work more arduous. However, it brings us much joy to observe that this group of children/youth were impacted the most.

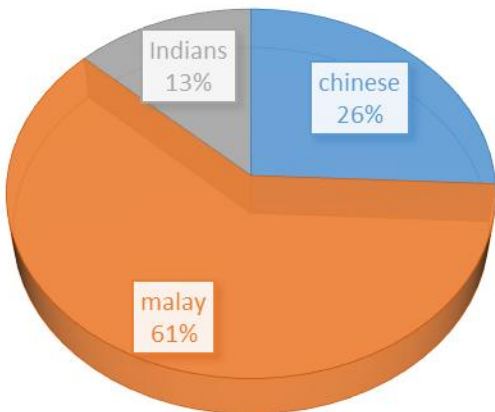
*"For it is in giving that we receive."*

What really keeps us going is the innocent smile on the children's faces, the little notes that they write to us with messages that really touches and encourages the team to journey on with them in this marathon race. We give our best to these children/youth and in return, we feel that we receive more than we have given to them. We learn to accept their strengths and weaknesses and recognize the uniqueness of each individual child/youth.

Margaret Teng  
Head of Program  
Friends of Children & Youth



➤ **Clients' Profile**

<b>Direct Clients</b>		
<p style="text-align: center;"><b>CHILDREN &amp; YOUTH</b></p>  <p>The pie chart is titled 'CHILDREN &amp; YOUTH'. It is divided into three segments: a large orange segment for 'malay' at 61%, a blue segment for 'chinese' at 26%, and a grey segment for 'Indians' at 13%.</p>	<b>Chinese</b>	<b>71</b>
	<b>Malay</b>	<b>169</b>
	<b>Indians</b>	<b>36</b>
	<b>Total</b>	<b>276</b>
<b>Indirect Clients – caregivers &amp; families</b>	<b>276</b>	
<b>TOTAL CLIENTS</b>	<b>552</b>	
<b>Age range</b>	<b>6-19 years old</b>	
<b>Gender</b>	<b>Male - 58%, Female - 42%</b>	
<b>Districts</b>	<b>Island-wide</b>	
<b>Type of Housing</b>	<b>Mainly from rented / owned 1 room – 4 rooms</b>	
<b>Special</b>	<b>Children &amp; Boys' Home and Foster Parent</b>	

➤ **Incarcerated Parent's Profile**

Some of the incarcerated parents have either been released or released on license (Home Detention). The latter scheme permits inmates to serve their sentence outside of Prison but subjected to wearing a tag (ankle) and to abide strictly to the curfew and reporting back to officers.

Our incarcerated parents comprise mainly of drug addicts, members of secret society, and some being involved in illegal money lending or petty crimes.

## ➤ **Volunteers**

### **a. Profiles**

As of 31 March 2015, there are 158 volunteers, comprising tertiary students and working professionals, both single and married who have signed up to be Children's Befriender, Ad-hoc volunteers, tutors, event committee & fund raising volunteers. There are also a number of volunteers who have withdrawn from the programme in view of personal issues, work or study commitments.

### **b. Training**



All volunteers have attended a 2-hour Learn & Share (L&S) session to be equipped with basic skills on how to befriend the children. Besides L&S session, we organized Befriender Sessions (BS) to equip and empower our volunteers. Selected befrienders may be picked to attend workshop/courses to better equip them with the necessary skills. We also bring in trainers to equip befrienders and support them in their

befriending journey with our children.

### **c. Assignment & Update of Child's Status**

An introduction between client and befriender would be arranged by staff at client's home. Befriender would have to submit a monthly update (FOC/Y Case Updates). This update tracks the progress between the befriender and child.

### **d. Monthly Food Ration**

Monthly basic food ration packs were distributed to a majority of FOC&Y participants during our monthly home visitation to each family. The food pack comprises items such as Milo, noodles, milk, biscuits, oil, rice & etc. Occasionally, we would also pack in some goodies such as chocolates or candies for these children.

#### e. Events & Outings (FOC & Y)

##### ❖ Shine & Strength Mentoring program



The Shine & Strength Program which was adopted and adapted from Hillsong Church was successfully launched in September 2014 with participation from twenty youth at our new premise in Kallang Leisure Park. [**SHINE** is a unique personal development and group-mentoring tool that uses an inspirational, practical and experiential approach to learning. This program is founded upon the premise that every life counts and has intrinsic value, and fosters an awareness of this belief. **STRENGTH** is about equipping adolescent youths with the knowledge and skills to discover who they are and the person they want to become. It also encourages men to find the strength and courage within them to make healthy choices and live to their full potential.]

To measure the effectiveness of the program, the pre and post evaluation method was adopted. The results were encouraging.

##### ❖ Year-End Christmas Party – “Deeper Roots through Love & Grace”

Themed “Deeper Roots through Love & Grace” Christmas Party, our annual Christmas party is a signature event in its 10<sup>th</sup> year running. The organizing team is a group of passionate volunteers who have been inspired by the changed lives of the children and youth. They gave of their time, talent and resources year after year despite the heavy commitments in their own personal lives. We are grateful for their selfless contributions.

It was a well-attended event with over 235 children, youth, volunteers, staff and board members. A short video drama was played for the children and youth, illustrating on how showing love and grace has the power to change lives. It was chosen to coincide and reinforce with our theme. A short skit based on the above story was put up by our FOC & Y staff team. We also have a long-term collaboration with the IFGF youth group who took the lead in using a game-based programme that is catered specifically to the youths’ age range for the imparting of values that are relevant to their development. They have also reinforced values such as perseverance and determination through engaging in a variety of games. We encouraged the participants of Shine and Strength programme to share about their experiences and learning point to encourage more participants for our next run.

In an effort to boost confidence among our children and youth and also to create a platform to discover talents, our yearly “LCSS got talents” has attracted 8 children/youth to come forward to participate in this competition. It comprises of singing, dancing, magic performance and keyboard instrument. Each child and youth was given a Smiggle stationery set to bring home for this festive season.



We were most heartened to have four youth alumni to dedicate their effort and time to help out at the Christmas party. Their lives have been impacted and they are now part of us to sow and impact into the lives of others, which is fully aligned to our goal of growing beneficiaries to volunteers.

#### **f. New Activity Centre in Kallang Leisure Park**

Three new interest-based activities were launched in our extended facility in Kallang Leisure Park. Namely, the **Dance Interest Group**, the **Pool Team** and the **Soccer Interest group**. These groups allow youths with the same interests to gather and be meaningfully engaged in a safe environment while they maneuver through life in the challenging teen years.

Besides the Interest group activities, the new activity centre has also hosted holiday events for children. Corporate partners like Verztec Consulting has sponsored a Mosaic art workshop for the children in June 2014, and Alpha & Omega Solicitors put together a team building session for the children in September 2014. There were also two parenting workshops conducted since the launch of the new activity centre. In addition, we have also conducted three volunteers related training sessions to equip our volunteers.

More exciting programs are in the pipeline which will include not only activities for children and youth but also the caregivers.

## g. Programme

We believe in approaching this FOC programme in a holistic approach by focusing on the 5 key thrusts namely:-

**Social, Physical, Emotional, Educational, Dollars (financial) - “SPEED”**

FOY activities-based programme employ a wholesome intervention and prevention approach through the 5 components services. These pillars are namely:-

**Moral, Personality, Skills & Social Development, Relational Skills & Financial Assistance**

## h. FOC & Y Success Story

### Journeying With the Vulnerable



Steven, an engineer by profession, shares with us his journey as a **volunteer tutor** with Life Community.

*Fabien had missed a great deal of education in his initial years due to his family*

*“I was introduced to Fabien\* in 2012. I met up with him weekly. Initially, I wanted to help with science or math. However, after the first few meetings, I realized that he needed help for ALL his subjects. The greatest challenge for me was that Fabien did not have a foundation from which I could work up from. I had to lay this foundation.*

*situation. He only started formal education at the age of 12. He entered school at the Primary 4 level, having to mix with children 2 years younger than him. This gave Fabien the time and an opportunity to catch up before attempting the Primary School Leaving Examinations (PSLE).*

*Despite coming from a dysfunctional family, Fabien has always been optimistic and cheerful, which is the most memorable part in working with him. He never blamed anyone for his circumstances. He chose to remain forward-looking. Whenever possible, he also extends a helping hand to his classmates and friends.*

*Fabien’s lack in life did not stop him from progressing. The road has been a steep incline for him. He is constantly challenged to put in more effort into his study especially with secondary school syllabi being much harder.”*

At age 14, Fabien attempted his PSLE. To everyone’s delight, Fabien, who could barely read or write at age 12, passed his PSLE. Fabien now has a much brighter future ahead of him because of the guidance and support that Steven and other volunteers have provided him and his family over the years.

\*Not his real name



## i. Case Study

### “Abandoned”



Shane’s father was incarcerated for illegal money lending. His mother left him in the care of his paternal grandmother and they are in the process of a divorce. Since his release, Shane’s father has had a new girlfriend, and is planning to start a family with her. Shane’s grandfather is currently incarcerated on drug-related offences.

8 year old Shane is living in a rental flat with his grandmother who works as a cleaner. She suffers from high-blood pressure and experiences pain in her legs and hands. Shane’s grandmother is dependent on medication in order to continue working to provide for Shane. She is financially burdened with her health issues.

Shane and his grandmother rely on financial assistance to get by. Life Community provides food ration to alleviate some of the financial stress. Shane struggles emotionally. He misses his parents and wonders why they don’t visit him. We are also working with Shane with issues of abandonment and the vulnerability of losing his grandmother. Work with Shane is a long journey. Life Community needs your support to continue to support Shane emotionally, educationally and socially as he matures and not ‘abandon’ Shane in his circumstances.

There are many children like Shane who are in need of long-term support due to their volatile family situations. These children require continuous social, emotional, educational, and financial support through the various challenges they face in their developmental years.

### 1.4.2 LIFE STUDENT CARE CENTRES

Last year, with the help of the supervisors and staff at our 4 Centres, we saw another year of strong enrolment at our Centres, and giving the children the care and attention, especially in the area of their social-emotional development.

I am also encouraged by the fact that there are many schools, corporate organisations and individuals who have come forth to partner with us to bless the children at our Centres. I am sure many are blessed by their giving, why I know this is when at the end of the day, I see their happy faces, as the children say thank you in their creative and child-like ways.

What motivates me on the job, is to hear the children calling out my name with excitement when I visit the Centres...to know that all the things that I have done are worth it, and are touching the lives of the young.

LIVES TOUCHED AND TRANSFORMED

Lim Beng Yong  
Head of Program  
Life Student Care



#### a. Centre Enrolment (as at 31<sup>st</sup> March 2015)

Life Student Care (LSC) reaches out to primary school children in the community regardless of race, language or religion by rendering affordable quality before and after school student care services.

As at 31<sup>st</sup> March 2015, there is a total enrolment of 372 students from the 4 Centres, a slight increase of 2% from last year.

**b. Report of Activities Conducted**

<b>Month</b>	<b>Activities</b>
April 2014	<ul style="list-style-type: none"> <li>• Run for Life Media Launch at Big Splash</li> <li>• Mission to Mars Robotics Workshop</li> <li>• 10 children performed a dance item at Donors, Volunteers and Staff Appreciation Dinner 2014</li> <li>• Easter Celebrations</li> <li>• Sandwich making, games and talk on personal hygiene and cleanliness</li> <li>• Tuition by college student</li> </ul>
May 2014	<ul style="list-style-type: none"> <li>• English Immersion programme</li> <li>• 28 children took part in community service day at Snow City</li> <li>• Meet the parents session</li> <li>• Grand reward day</li> <li>• Tuition by college student</li> </ul>
June 2014	<ul style="list-style-type: none"> <li>• Outings to Singapore Discovery Centre/Army Museum/SAFTI, Marina Barrage, Gardens by the Bay, Pasir Ris Park, River Safari and Singapore Botanic Gardens</li> <li>• Charity Fun Fare</li> <li>• Interactive session on the races and landmarks/icons of Singapore</li> <li>• Cyber Wellness programme</li> <li>• Outings to River Safari</li> <li>• Kite flying at Marina Barrage</li> <li>• Gardening - planting Balsam seeds</li> <li>• Insects origami</li> <li>• Games for P6 foundation students</li> <li>• Tuition by secondary school students</li> </ul>
July 2014	<ul style="list-style-type: none"> <li>• Parenting talk – Dare to Discipline</li> <li>• 126 children participated in the Run For Life 2014</li> <li>• Fun math lotto games and painting and football</li> <li>• Tuition by college student</li> <li>• Fibre broadband upgrade</li> </ul>
August 2014	<ul style="list-style-type: none"> <li>• Anger management counselling sessions</li> <li>• Teacher's training</li> <li>• Make animal masks</li> <li>• Treasure Hunt</li> </ul>

	<ul style="list-style-type: none"> <li>• Arts and Crafts</li> <li>• Open House</li> <li>• Tools for schools campaign</li> <li>• Installation of phone system</li> </ul>
September 2014	<ul style="list-style-type: none"> <li>• Arts and Crafts, skit on good manners and charades</li> <li>• Baking cookies, pizza and games</li> <li>• Arts and Crafts, skit of lion and the mouse, and polaroid photo session</li> <li>• Elderly care and cyber bullying, appreciation to grandparents and making greeting cards and pencil holders using recycled materials</li> <li>• Play douche ball and frisbee</li> <li>• Mentoring sessions on cyber wellness</li> <li>• Singapore Chinese Orchestra concert</li> <li>• Sentosa Gives programme</li> <li>• Teacher's Day celebrations</li> <li>• Attended More Than Words 2014 concert performance</li> </ul>
October 2014	<ul style="list-style-type: none"> <li>• Children's Day Celebrations – chocolate party and distribution of gifts</li> <li>• Making masks and windmill, and play captain's ball and freeze catch</li> <li>• Use of food labels to make healthier food choices</li> <li>• Centre painting and clean up</li> <li>• Orientation</li> </ul>
November 2014	<ul style="list-style-type: none"> <li>• Parenting talk on Cyber Wellness – Parenting Children in the Digital Age</li> <li>• SG Creations – Theatre workshop</li> <li>• Arts and Crafts</li> <li>• English Reading Programmes</li> <li>• Cyclical Maintenance</li> <li>• Orientation</li> <li>• Completion of Group Tuition for Primary 6 Mathematics</li> </ul>
December 2014	<ul style="list-style-type: none"> <li>• SG Creations – Theatre performance at *SCAPE</li> <li>• Christmas celebrations</li> <li>• Build your own tree Christmas programme</li> <li>• Children's camp to develop teamwork, bonding and leadership</li> <li>• Fun with music</li> <li>• Pizza making</li> </ul>

	<ul style="list-style-type: none"> <li>• Cyclical Maintenance</li> <li>• Fibre broadband upgrade</li> </ul>
January 2015	<ul style="list-style-type: none"> <li>• Contemporary Art Fun at National Museum</li> </ul>
February 2015	<ul style="list-style-type: none"> <li>• Reading and journaling sessions</li> <li>• P6 Group Mathematics Tuition pilot project</li> <li>• Chinese New Year celebrations</li> </ul>
March 2015	<ul style="list-style-type: none"> <li>• Chinese New Year celebrations</li> <li>• Arts and Crafts</li> <li>• Swimsafer community outreach at Sports Hub</li> <li>• Teamwork activities and games</li> <li>• 3D printing workshop</li> <li>• Survey on design and use of technology</li> <li>• Tribute to our late Mr Lee Kuan Yew</li> <li>• Teacher's training</li> <li>• Installation of LAN cabling</li> </ul>

**c. Benevolent Expense Recipients**

A total of \$4,431 has been disbursed to 28 needy students on top of ComCare's subsidies given to lower income families at our 4 Student Care Centres.

**d. I Coach U Programme**

We supported 4 children from Life Student Care under this programme. Out of the 4 children, 3 children have made progress in their academic studies under the 1 on 1 tutoring.

**e. In- House Counselling**

We have an in-house counsellor to add value to the children's lives. Our counsellor has counselled an average of 42 children per month in the year.

**f. Programme**

Our mission in LSC is to provide quality student care services to primary school children by focusing on the total development of the child in a safe and congenial "home" environment. At LSC, we endeavor to give the children a holistic "SPICES" programme with activities focusing on the **S**ocial, **P**hysical, **I**ntellectual, **C**reative, **E**moional and **S**piritual (moral) aspects of well-being.

**g. Appreciation from Parents of LSC Students**

Mother of child attending Life Student Care

"I am writing this letter to compliment teacher Sarah for all her efforts taken during these few years. ...with her patient teaching and caring, my son had improved a lot in controlling his temper.

I really appreciated the way in which she taught him regardless in studies or his attitude...

Thank you again for the wonderful work she had done ..."

Mary, mother of child attending Life Student Care

"... my son has improved his behaviour, he can communicate well with teachers and has established good relationship with his peers.

A big thank you to teacher and the group for understanding and never-ending patience. Keep up the good work."

Mother of 2 children attending Life Student Care

"...I would like to extend my greatest appreciation and thankfulness for their stay in the centre (Life Student Care)...

Under the care, dedicated and diligent teacher Julia, school work is always completed ...The kids appreciated the attention given...

...holiday program ...are the Best holidays ...the kids are enjoying these events so much that I would like to take this chance to thank you for the great arrangement.

Thank You for all the wonderful things that you have created for the kids ...and letting them have such a memorable time in their lives."



- **Our Partnerships with the Community**

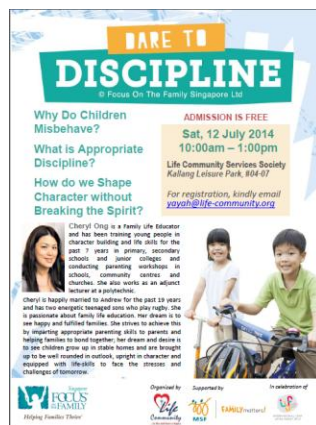
- **Cyber Wellness talk for the children at LSC**

With the increasing availability to Internet and online gaming in the households, unrestricted access and exposure to rated materials could have undesirable outcomes such as violence and vulgarity in the children. To mitigate the risk and to promote cyber wellness, we have engaged TOUCH Cyber Wellness to conduct a talk for the 79 children at the Centre in Jun 2014.

The lower primary children are encouraged not to spend too much time on the computers, but to spend time on meaning activities. They were also taught to behave respectfully, to exercise care towards others' feelings and maintain harmonious online relationships.

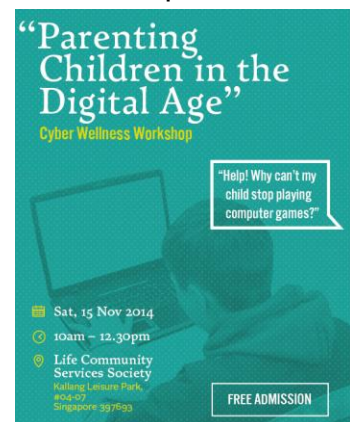
The older children were taught to be accountable for their actions online. They were highlighted of the risk they are exposed to, and to be vigilant to identify online dangers.

- **Parenting Talks**



We believe that the parents and guardians play a primary role over their children's development. Hence we have conducted parenting talks to parents and caregivers of the children to equip them with better parenting skills. We have conducted 2 talks in 2014.

The first talk in July was on the topic "Dare to Discipline", in which the parents were given practical tips on how to discipline and bring up their children. In Nov 2014, we covered the topic "Parenting Children in the Digital Age", in which the parents were taught the dangers of gaming addiction, the importance of cultivating relationships with their children before setting rules, and how to restrict and monitor their children's smartphone usage.



- **Theatre Workshop by Singapore Creations Etc.**

Theatre is one of the ways to develop a child's creativity and self-confidence, and it is rare for children to take up theatre, especially those who could not afford it. We have partnered with Singapore Creations Etc. to provide theatre workshops for 6 less privileged LSC children from Nov – Dec 2014. This workshop was sponsored by Deutsche Bank.

Through the workshops, the participants learnt first-hand from industry professionals every aspect of creating a theatre production, from start to finish. It ended with 4 public performances held at \*SCAPE. The participants discussed about their hopes, fears and concerns, which was encapsulated into a play called "We Have Something To Say". Through these rich experiences, the children gained invaluable life skills such as awareness of values, tolerance and compassion, conflict resolution, determination, learning from peers and a love of life.



- **Partnership with Lorna Whiston**



We are grateful to Lorna Whiston for their partnerships throughout the years. Through these partnerships, Lorna Whiston has played a significant role in inculcating the love of reading to the children at LSC, and more importantly to help the students succeed in their studies and in life.

**Train the trainers**

Lorna Whiston has provided our Student Care Teachers at LSC with complimentary courses on phonics, such as "Supporting Children with Reading Phonics", "Creative Readers" and "Improving Children's Writing Skills". These courses have helped the teachers gain knowledge on phonics so that our teachers are able to impart phonics skills to the children at the Centres.

## Fun With English programmes

During the Nov – Dec holidays in 2014, Lorna Whiston conducted Fun with English programmes for the students at our Centres. A total of 103 LSC children attended this programme.

- **Nan Chiau High School Appreciation Letter**

At LSC, we have active partnerships with the grassroots and schools to provide programmes for the children at the Centres. In January 2015, LSC is honored to receive an appreciation letter from one such school.



新加坡福建會館

南僑中學 Nan Chiau High School

20 Anchorvale Link, Singapore 545079 • Tel: 6489 7971 • Fax: 6489 7970 • Email: nchs@moe.edu.sg

"At Nan Chiau High School, one of the platforms to develop our students to be leaders with compassion is through Service Learning Projects. For the past five years, our students have worked with various VWOS. As such, many of them have become active contributors to the various VWOS.

All these could not have been possible without the support and partnership of our valued partners like yourself. *We want to express our sincere gratitude on your continued support for accommodating our students for their projects in values in Action for the past few years.* It is with your partnership that our students truly learn the values and soft skills for them to develop holistically, and at the same time, show their appreciation and awareness for people in the community."

- Mr Tan Yee Kan, Principal of Nan Chiau High School

### 1.4.3 MIGHTYKIDS, FAMILIES & COMMUNITY

A kind word of affirmation brings out the twinkle in a child's eyes. What a joy it is to be a channel of hope that contributes to the positive transformation in a child's life!

It is really heart-warming to know that we are not alone in serving the disadvantaged and the at-risk. MightyKFC is privileged to have many individuals and corporations who have gone beyond philanthropic giving to being personally engaged with our children. Combining their different talents, skills and resources, they co-labour with us in plowing, in sowing the seeds of love, nourishing the tender shoots and even pruning for effective growth. This grace of community spirit and volunteerism is what cheers us on in enabling and empowering young lives for the present and future generation.

*Together, we cultivate the garden of these young hearts,  
motivating them to intentional fruitfulness.*

Ann Tan  
Head of Programme  
MightyKids, Families & Community



MightyKids, Families & Community is a community programme that believes in the potential and value of every child and the importance of the family unit as foundational to the growth and progress of the community.

#### a. Objectives

MightyKFC seeks to provide a loving and learning environment in which children and youths can be affirmed and nurtured to live an empowered life.

## b. Clients' Profile

Direct Clients	
<p><b>CHILDREN &amp; YOUTH</b></p> <p>A 3D pie chart titled 'CHILDREN &amp; YOUTH' showing the racial distribution of clients. The chart is divided into four segments: Chinese (blue, 44%), Malay (orange, 44%), Indian (grey, 11%), and Others (yellow, 1%). A legend at the bottom identifies the colors: Chinese (blue), Malay (orange), Indian (grey), and Others (yellow).</p>	Chinese 126
	Malay 125
	Indians 31
	Others 3
	<b>Total 285</b>
Indirect Clients (Care Givers)	36
<b>TOTAL CLIENTS</b>	<b>321</b>
Family Bonding & Community Engagement	214
No of volunteers- events & activities	283
Age range	6 – 19 years old
Race (Families)	ALL races
Gender	Male & Female
Districts	Telok Blangah Estate

## c. Calendar of Events

Month	Activities
Apr 2014	<ul style="list-style-type: none"> <li>Assembly Talks at Shelton College</li> </ul>
May 2014	<ul style="list-style-type: none"> <li>Build A Bike</li> <li>Fun @ Snow City</li> </ul>
June 2014	<ul style="list-style-type: none"> <li>Rock Climbing</li> <li>Botanical Gardens</li> <li>Overnight Camp</li> <li>Fishing</li> <li>Delta League Soccer Tournament</li> <li>Dialogue in the dark</li> </ul>
July 2014	<ul style="list-style-type: none"> <li>Parenting Talk – Dare To Discipline</li> <li>Telematch</li> </ul>
Aug 2014	<ul style="list-style-type: none"> <li>Baking lessons</li> <li>Arts &amp; Craft</li> <li>English Immersion Program</li> </ul>

Sept 2014	<ul style="list-style-type: none"> <li>• Baking lessons</li> <li>• SEA Aquarium Educational Tour</li> <li>• Robotic Assembling</li> <li>• Soap Making</li> <li>• English Immersion Program</li> <li>• Build A Bear</li> </ul>
Oct 2014	<ul style="list-style-type: none"> <li>• Children Day Celebration @ Alive Museum</li> <li>• Family visitation &amp; grocery distribution</li> <li>• English Immersion Program</li> <li>• Futsal Soccer Tournament</li> </ul>
Nov 2014	<ul style="list-style-type: none"> <li>• Baking For A Social Cause</li> <li>• Parenting Talk – How to talk so kids will listen</li> <li>• Toy Buffet</li> <li>• Serving the Elderly</li> </ul>
Dec 2014	<ul style="list-style-type: none"> <li>• Theatre Workshops</li> <li>• Christmas Party</li> <li>• Soccer Match</li> </ul>
Jan 2015	<ul style="list-style-type: none"> <li>• Family visitation &amp; grocery distribution</li> <li>• Art Appreciation @ Singapore Art Museum</li> </ul>
Feb 2015	<ul style="list-style-type: none"> <li>• Parenting Talk – Raising Secure Daughters and Confident Sons</li> <li>• Show &amp; Tell My Art Piece</li> </ul>
Mar 2015	<ul style="list-style-type: none"> <li>• Bonding with the Elderly</li> <li>• Parenting Talk - SmartTalk</li> <li>• Fun @ West Coast Park</li> </ul>

**d. Key Intervention Approaches Include:-**

**❖ Providing A Conducive Environment**

MightyKFC reaches out to community kids and youths from low income, dysfunctional or at-risk family background. Providing a safe family-like environment is crucial to the work here at MightyKFC as we seek to affirm each child in his or her self-worth and help them to be overcomers no matter what difficulties they may encounter. An affirming and learning environment will help to improve their socio-emotional well-being and enhance their ability to develop their potential.

**❖ Identify**

Through our befriending and assessment carried out by our staff, at-risk families are identified for further intervention and preventive measures. The child/youth receives proper nurturing and is empowered to overcome emotional and behavioral challenges that are a result of life circumstances at home or in other environmental settings.



## ❖ Preventive

Early intervention measures are carried out with identified individuals through monthly mentoring sessions in order to address various emotional, transitional, family or delinquent issues that may have surfaced. The centre also serves as a catchment area for children and youths, providing them a safe environment which they can call home and also preventing them from hanging out with the wrong company outside.

### e. Affirmation Brings Out A Child's Potential



Bi\*, 12, is an introvert. Being shy by nature, she seldom speaks up and would often cover her mouth instinctively whenever she has to talk. Having grown up in a family of six, the burden of having to take care of her younger siblings was placed on her at a very young age. Coupled with the family's dire financial situation, she was unmotivated and irregular in her school attendance. Bi also struggled with low self-esteem due to her failing grades.

Through the affirmation and care of our staff, Bi was able to overcome her limitations and struggles to participate together with 20 children from other programs under the umbrella of Life Community in SG Creation's "We Have Something to Say" project from 15<sup>th</sup> Nov to 16 Dec 2014. Our staff went the extra mile to baby-sit her 3 years old sister so that Bi\* could go for the practices. As a result of her participation, she was able to develop self-confidence and was even selected to become one of the 4 lead dancers!

The SG creation project has given our children, particularly Bi, an opportunity **to rise above** her **circumstances** and break out of self-restraint and inhibition to **realise her potential**. Our children are immensely blessed to be able to receive free trainings from professional artistes in learning various aspects of the performing arts. This privileged learning experience would otherwise have been just a vague and seemingly impossible dream, especially for those from disadvantaged families.

Now Bi\* smiles confidently as she expresses her appreciation,

*"Thank you for helping me discover my talent".*

## f. A Youth Empowered Through Mentoring



Timothy\* was often rowdy, indulging in rough play and vulgarities, leading to being frequently disciplined at our centre. Apart from his behavioral problems, Timothy\* was also unmotivated in his studies and was aimless in life; without anything to look forward to. He was also heavily involved in other extra-curricular activities as well as hanging out with some unhealthy company.

The breakthrough for Timothy\*'s life came during April 2014 when he heard a motivational speaker's testimony in school. As he listened intently to the speaker's life story, Timothy\* realised that he was moving in a vicious circle aimlessly and he purposed in his heart that something in his life needed to be changed.

### **Journey of Transformation Begins**

During the mentoring sessions with our staff, he was brought on a journey from the start of his life to the end point. **It was there that he was faced with this question "What do you want to accomplish in life?"** After much thought, he decided that he would make changes in his life in order to do well in his studies and have a bright future ahead. Behavioral changes in him were evident as the mentoring sessions continued. He became less rowdy and has learnt to tone down on his vulgarities. He had also decided to break free from bad company who were influencing him in a negative manner.

This led to a greater sense of motivation in his studies and the positive changes in his life did not go unnoticed as he was approached by his school teacher to join the Student Council in his school. This was indeed an achievement for Timothy\*. He is now a changed person with the aspiration of wanting to motivate and make a difference in the lives of his friends. He was even presented with an award by his school for good character last year.

### **Making a Difference**

Now at the age of 14, Timothy\* has attributed the change in his life to the staff in MightyKFC, who painstakingly journeyed with him and sowed selflessly into his life, enabling and empowering him to be a role model amongst his friends in school and at the centre. In his own words, he exclaimed,

*"My life would not have become different, if I didn't come to MightyKFC and make a wise choice to turn my life around. Thank you to all the staff and volunteers at MightyKFC for empowering me".*

\*Not his real name

### **g. “I Coach U” Program**

Five youths benefitted from free tuition under our “ICU” program. One of them has made very good progress in his English. He is now confident to move ahead without the need for tuition.

### **h. Academic Motivation**

Around 25 children were enrolled in the English Immersion Program, conducted by about 20 volunteers from Deutsche Bank on alternate Fridays. In each session, English & Mathematics were taught in a creative way using various themes to build on the children’s imagination and encouraging their verbal and written expression.

In our continuing efforts to give holistic intervention to our beneficiaries, weekly tuition is provided to support those who are academically weak. We would like to thank students from Nanyang Girls High School who selflessly spend their afternoons in tutoring and engaging our children in their schoolwork. Small steps are made to attain progress and we believe that our continuing focus has made a difference in the lives of the children.



### **i. Family Bonding & Equipping**



Quarterly parenting talks are organized during the year to engage and empower parents to be equipped with the necessary skills of communicating and bringing up their children with positive role modeling.



Topics covered as follows:

- *Dare to discipline*
- *How to talk so your kids will listen*
- *Raising secure daughters and confident sons*
- *Smart talk & Bonding through kite-flying*

#### j. **Community Engagement**

Part of the process in developing a beneficiary's life includes empowering them to give back to the community through meaningful activities. We create platforms to promote community building and caring through intergenerational bonding activities and educational talks.

##### ❖ **Caring for the elderly**



Ten MightyKFC youths led the initiative in accompanying the wheelchair-bound elderly folks from SASCO for an outing to the Sentosa Underwater World. The lives of the youths were much impacted as reflected by an insight shared by a youth who volunteered in this “give-back” event.

**“This experience of taking care of the elderly makes me more compassionate and considerate towards them. It makes me realize that I will grow old one day and I will also need someone else to hold my hand.”**

This successful event was followed up with a second event in which 18 SASCO elderly were invited to the premises of MightyKFC for a time of fun filled activities with the younger children. Balloon sculpting and mask-making were chosen as therapeutic play; with bright rainbow colours being used to stimulate and activate their senses. Under the guidance of volunteers, the children hosted the whole event, teaching the elderly balloon sculpting and helping to decorate their masks. They happily served the refreshments and presented door gifts to the elderly.



**“I am so happy to be able to make a bracelet sculpture for one granny.” chirps the child proudly.**

These intergenerational bonding and interaction activities left a lasting impression on the beneficiaries of both organizations.



## ❖ Community cohesion

We are also aware of the need for community cohesion and the importance of helping foreigners to assimilate into our local community. We have conducted 3 talks to an assembly of 40 international students at the nearby Shelton College, covering practical issues on “Knowing self and others”, “Time Management” and “Stress Management”.

### k. Valued Supporting Partners

Adopting the many helping hands approach, the course of intervention with our beneficiaries would not have been made possible without the help of our valued partners, sponsors and donors who have contributed significantly to the lives of our beneficiaries. Some volunteers rolled up their sleeves to help clean up the centre, thereby making the place more conducive for our beneficiaries. Others contributed in cooking, baking and organizing learning activities for our children.



We would like to specially thank all our volunteers, partners and donors who have given their time, resources and efforts in working together with MightyKFC to empower and make a positive impact in the lives of our beneficiaries.

## 1.5 REVIEW OF FINANCIAL STATEMENT

### 1.5.1 Key Management Remuneration

Number of staff in the following remuneration band:

\$100,001 to \$150,000

2015

2014

1

-

### 1.5.2 Related Party Transactions

A related party includes the members of the Executive Council and key management of the Society. It also includes an entity or person that directly or indirectly controls, is controlled by, or is under common or joint control with these persons. During the year the following related party transactions were made:

	<u>2015</u> S\$	<u>2014</u> S\$
<b>With a related party</b>		
Storage	9,600	9,600
Other Fees	1,200	1,200
Tax deductible donations received	79,760	35,000
<b>With members of the Executive Council</b>		
Tax deductible donations received	30,781	350

### 1.5.3 Reserve Policy

The Society's Reserve Policy is to retain not more than 5 years of its net annual operating expenditure.

	<u>2015</u> S\$	<u>2014</u> S\$	<u>% Increase/ (Decrease)</u>
<b>Unrestricted Funds (Reserves)</b>	3,428,326	2,897,678	18%
<b>Restricted Funds:</b>			
-Deferred Capital Fund	153,897	-	
-Friends of Children Fund	-	(57,164)	
-Friends of Youth Fund	-	65,781	
-Life Student Care Benevolent Fund	9,263	12,044	
-MightyKids, Families & Community Fund	-	16,228	
-Care & Share Fund	10,000	-	
	-----	-----	
	173,160	36,889	369%
	-----	-----	
<b>Total Accumulated Funds</b>	3,601,486	2,934,567	23%
	=====	=====	
Ratio of Reserves to Net Annual Operating Expenditure	2.76	2.59	



#### **1.5.4 Management of Conflict of Interest**

There is no paid staff on the Board of the Society.

Board members are required to disclose to the Board:

- i) Any interest that he may have, whether directly or indirectly, in any contracts or business transactions of whatever nature that the Society may enter into or in any organizations that the Society has dealings with or is considering dealing with (whether as a joint venture partner or otherwise); and
- ii) Any personal interest accruing to him as one of the Company's supplier, user of services or beneficiary.

The affected board member may not vote on the issue that was the subject matter of the disclosure nor participate in discussions relating to the same save that he may provide explanation or clarification of his interest in the said issue if this should be required by the Board. The minutes of this particular meeting will clearly document the disclosure made as well as the basis for arriving at the final decision in relation to the issue at stake.



---

**Mr Goh Kng Yan**  
**Chairman**



---

**Mr Seow Kiat Wang**  
**Honorary Treasurer**

**Dated 22 Jun 2015**